



Arlington, Woodside Park, N12 7JR

£4,600 Per Calendar Month

Council Tax Band G

REAL ESTATES
Est.1981

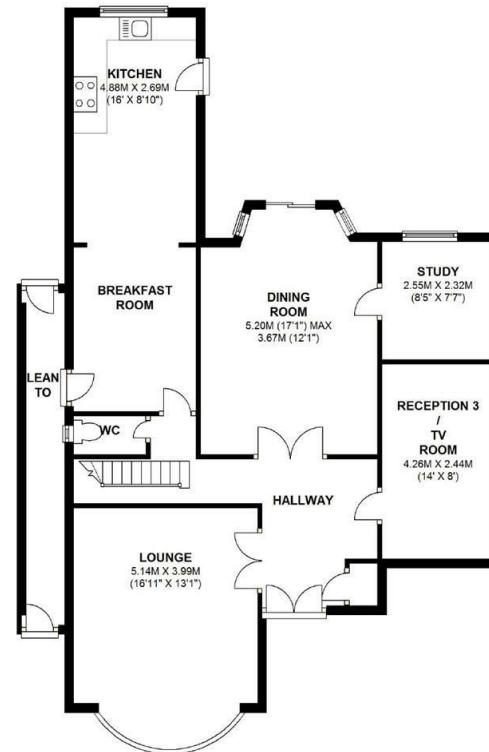
Estate Agents · Residential Sales · Investments · Lettings

*** AVAILABLE 1ST AUGUST * UNFURNISHED *A 4 BEDROOM**
DETACHED family home in the heart of Woodside Park and within the catchment for Woodridge Primary School. Woodside Park and West Finchley Northern Line tube stations are close by.

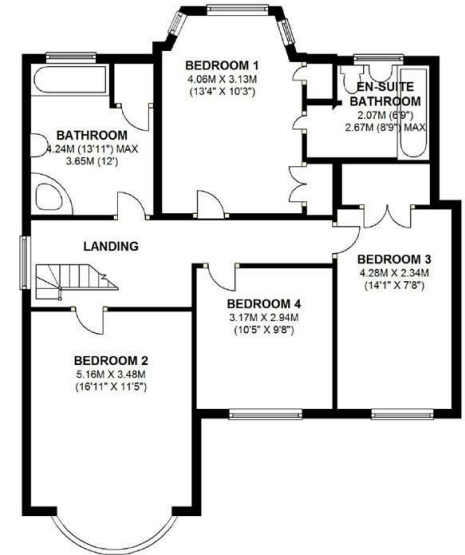
The generous living accommodation comprises lounge, dining room, fitted kitchen/breakfast room, study and tv room to the ground floor. There are 4 bedrooms and 2 bathrooms (1 en suite) to the 1st floor.

The rear garden extends to approx 80' and the front provides off street parking for 2-3 cars.

GROUND FLOOR
 APPROX. 100.0 SQ. METRES (1076.0 SQ. FEET)



FIRST FLOOR
 APPROX. 83.0 SQ. METRES (893.3 SQ. FEET)



TOTAL AREA: APPROX. 175.6 SQ. METRES (1890.3 SQ. FEET)

Energy Efficiency Rating		Current	Potential
Very energy efficient - lower running costs			
(12 plus) A			83
(91-91) B			
(69-90) C			
(55-60) D		62	
(39-54) E			
(21-38) F			
(1-20) G			
Not energy efficient - higher running costs			
England & Wales		EU Directive 2002/91/EC	